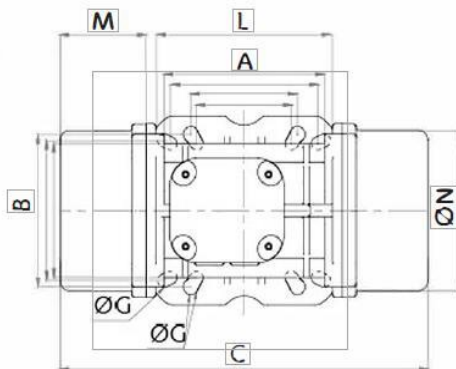
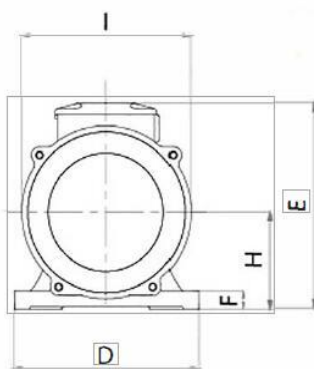




300/3M

Single phase-2poles-3000RPM-50HZ
230 Voltage

Mechanical Features			Electric Features	
General			General	
Working moment	6.4	kg.cm	Nominal voltage	230V
Unblance	3.2	kg.cm	Input power	0.29KW
Force	308	kg	Current A max	1.58A
Bearing			Power factor	0.8
TYPE(C&U)	6303		La/in	3.6
	100%	1725	Certification	
Life(h)	80%	3524	ETL CLASS II DIV.II	T4
	50%	14195	GROUP F G TENV NEMA 4	
Bearing Grease			ATEX II 3D Ex tD A22 T100°	
Lube Schedule	IP66			
Lube replacement	Amb Temp. (-20°~+40°)			
Grease Type				



A	90
B	125
C	253
M	45
G	13
Holes	4
D	155
E	175
F	15
H	79
I	142
L	163
N	131

Clamping torque(Nm) 80

weight	Screw	washer	Cable type	Cable Glande
9.9	M12	13X24	3GX2.5	M20X1.5